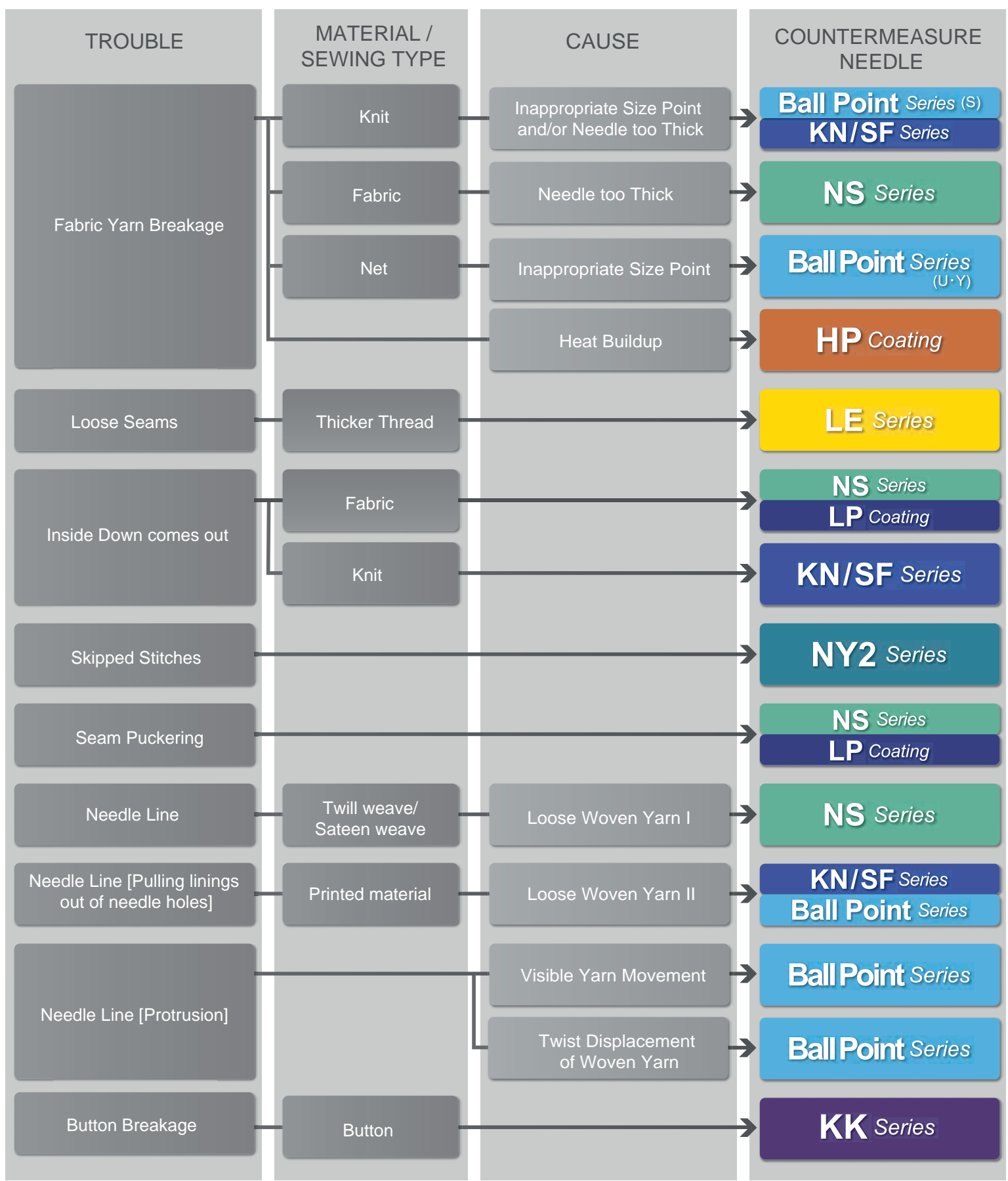




SEWING TROUBLE and COUNTERMEASURE NEEDLE

- APPAREL -



ORGAN NEEDLE CO., LTD.

Fabric Yarn Breakage on Knit

TROUBLE



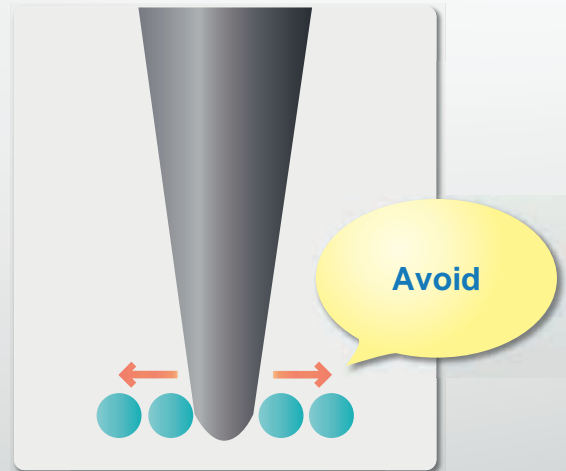
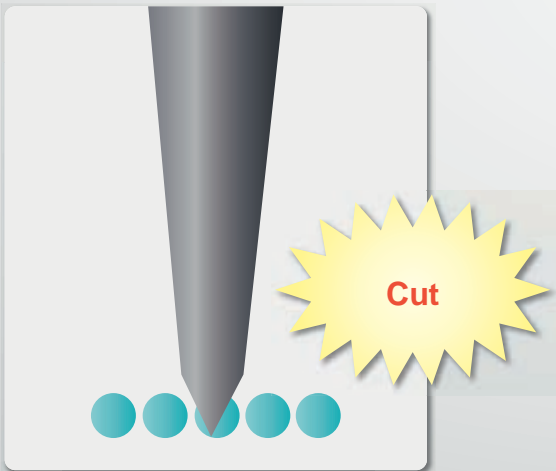
SOLUTION

Prevent Pattern of Knit Breakage
Select most appropriate Ball-point not to cut yarns

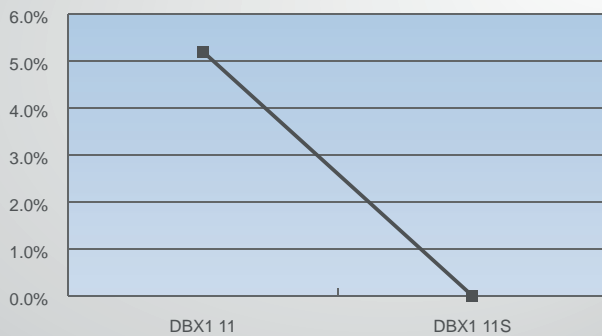
COUNTERMEASURE NEEDLE

Ball Point *Series (S)*

ILLUSTRATION



INCIDENCE OF FABRIC YARN BREAKAGE



Point!

Avoidance of direct contact with the yarn by the tip of the point is important.



ORGAN NEEDLE CO., LTD.

Fabric Yarn Breakage on Fine Knit

TROUBLE



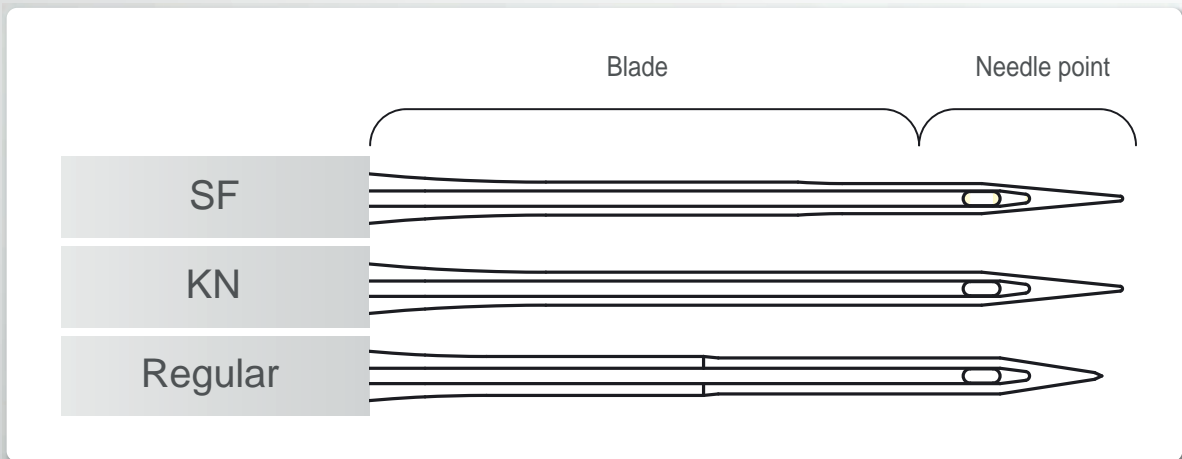
SOLUTION

Prevent Pattern of Knit Breakage
Select most appropriate Ball-point not to cut yarns

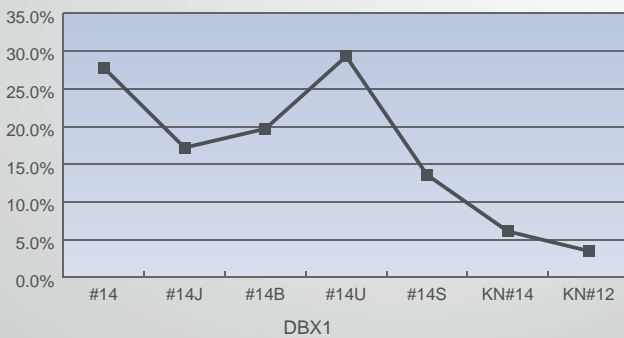
COUNTERMEASURE NEEDLE

KN/SF Series

COMPARATIVE ILLUSTRATION



INCIDENCE OF FABRIC YARN BREAKAGE



ADVICE

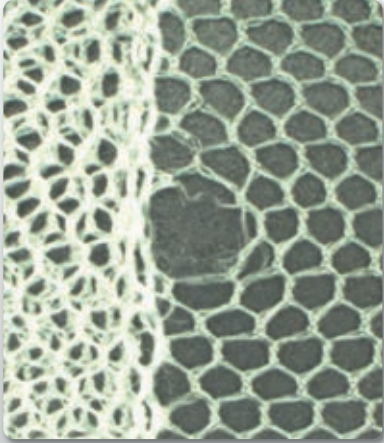
When KN series are not effective in preventing Fabric Yarn Breakage, it is best to use the SF series.



ORGAN NEEDLE CO., LTD.

Fabric Yarn Breakage on Net

TROUBLE



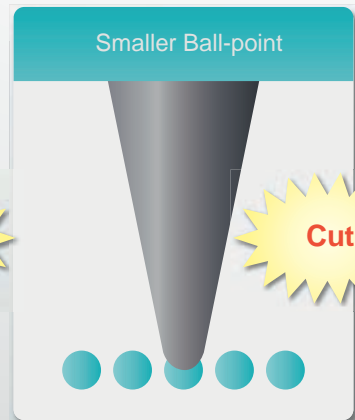
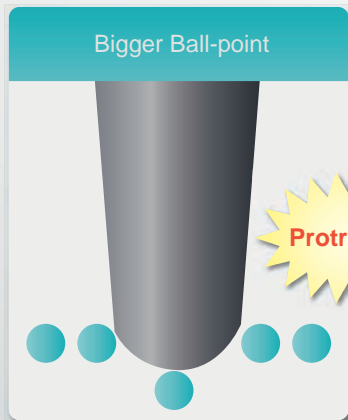
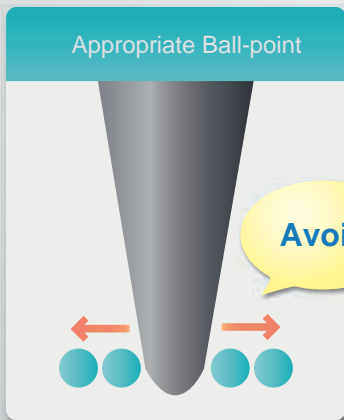
SOLUTION

Select most appropriate Ball-point not to cut yarns

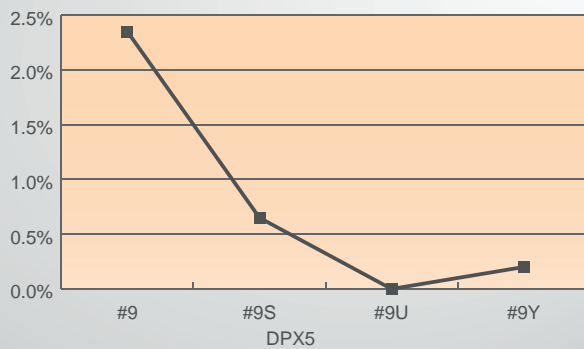
COUNTERMEASURE NEEDLE

Ball Point Series
(U·Y)

ILLUSTRATION



INCIDENCE OF FABRIC YARN BREAKAGE



Point!

Please choose a needle point that is 0.7-1.4 times the diameter of the yarn being used.



ORGAN NEEDLE CO., LTD.

Loose Seams caused by Thicker Thread

TROUBLE



SOLUTION

Smooth Thread Movement during Sewing

COUNTERMEASURE NEEDLE

LE Series

LINE

System	8	9	10	11	12	13	14	16	18	19	20	21	22	23	24	Former systems
DPX134LE(DPX5)		○	○	○	○		○	○	○	○	○	○	○	○		DP-K15
DPX17LE							○	○	○	○	○	○	○	○	○	DP-K35
DVX57LE								○	○	○	○	○	○		○	DV-K20, DV-K25
DVX57LE-NY2									○	○						
UYX128LE	○	○	○	○			○	○	○	○		○		○		DV-K39
DCX27LE(DCX1)				○			○	○								DC-K21
DBX1KNLE		○	○	○	○											DB-K23
DBXK5*	○	○	○	○	○	○	○	○	○	○						

Point!

*DBXK5 is DBX1 with a larger needle eye. Yet larger than the DBX K5 needle eye are DBX9ST and DBX7ST.

UYX128LE is UYX128GAS with a larger needle eye.

Despite a thinner needle, a thick thread can still be used, reducing loose seams.



ORGAN NEEDLE CO., LTD.

Skipped Stitches

TROUBLE



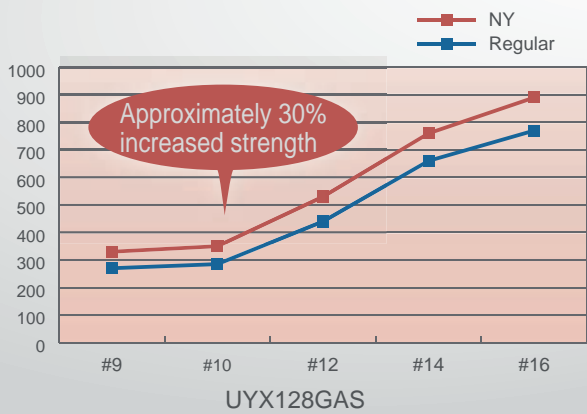
SOLUTION

Reduce Needle Deflection
Improve Loop Formation

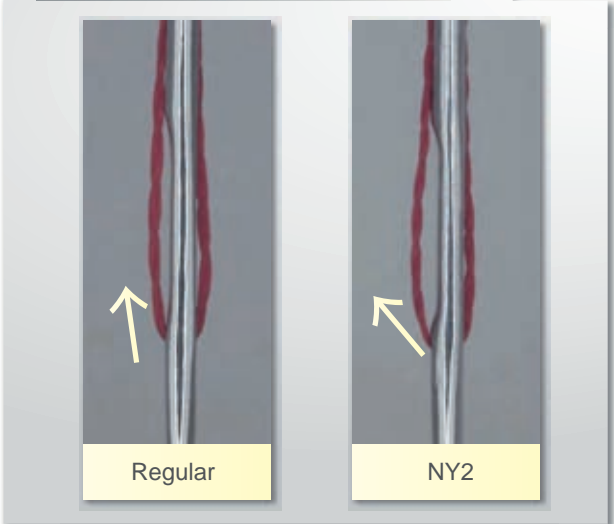
COUNTERMEASURE NEEDLE

NY2 Series

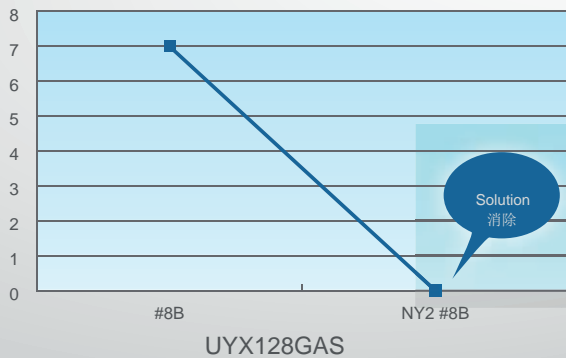
STRENGTH TEST



COMPARATIVE PHOTOGRAPH



INCIDENCE OF SKIPPED STITCHES



NY2 Series

As there is a long taper in the blade, needle deflection is dramatically reduced in high-speed sewing conditions.

As there is a Cliffscarf, the hook and the looper can catch thread even imperfect loops.



ORGAN NEEDLE CO., LTD.

Seam Puckering

TROUBLE



SOLUTION

Reduce Friction between Needle and Material

COUNTERMEASURE NEEDLE

NS Series
LP Coating

COMPARATIVE PHOTOGRAPH



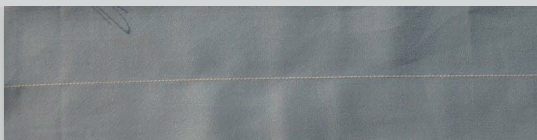
DBX1 #12



DBX1 #11

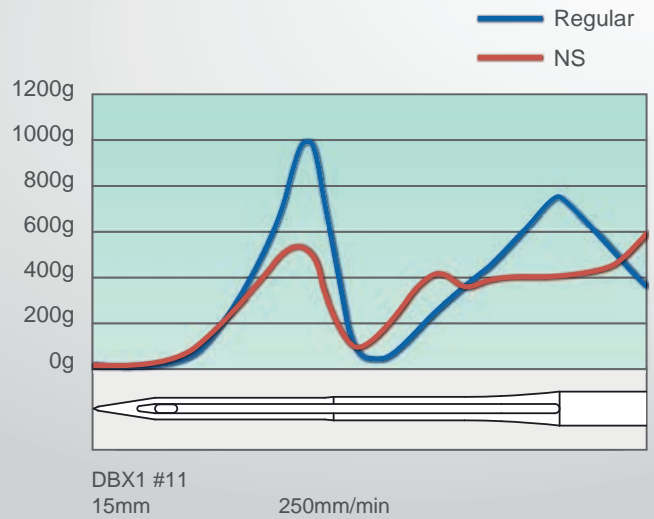


DBX1 #9



DBX1NS #9

COMPARISON OF PENETRATION RESISTANCE



ADVICE

NS series has LP coating, thereby cushioning the penetration resistance.



ORGAN NEEDLE CO., LTD.

Needle Line

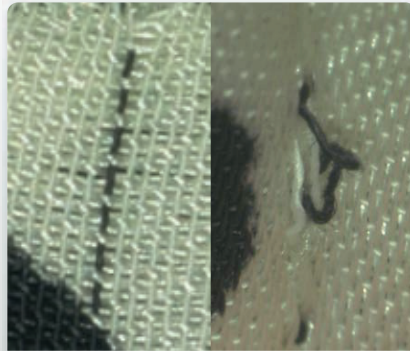
TROUBLE



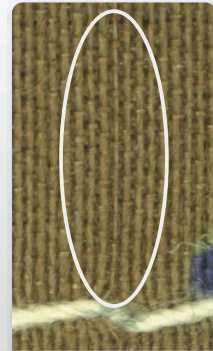
Twill weave/
Sateen weave



Printed material



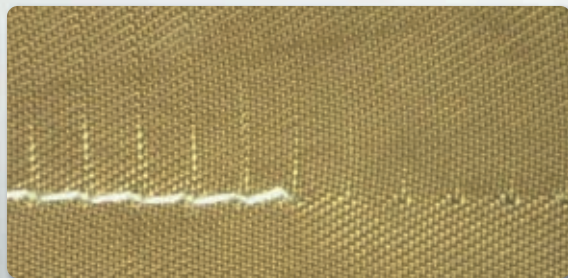
Visible Yarn Movement



Twist Displacement
of Woven Yarn

TROUBLE	MATERIAL/ SEWING TYPE	CAUSE	COUNTERMEASURE NEEDLE
Needle Line	Twill weave/ Sateen weave	Loose Woven Yarn I	NS Series
Needle Line [Pulling linings out of needle holes]	Printed material	Loose Woven Yarn II	KN/SF Series Ball Point Series
Needle Line [Protrusion]		Visible Yarn Movement	Ball Point Series
		Twist Displacement of Woven Yarn	Ball Point Series

ADVICE



There are causes where needle line can be resolved by removing the thread and adjusting the material by hand. It is difficult to solve such problems by adjusting the needle alone.



ORGAN NEEDLE CO., LTD.